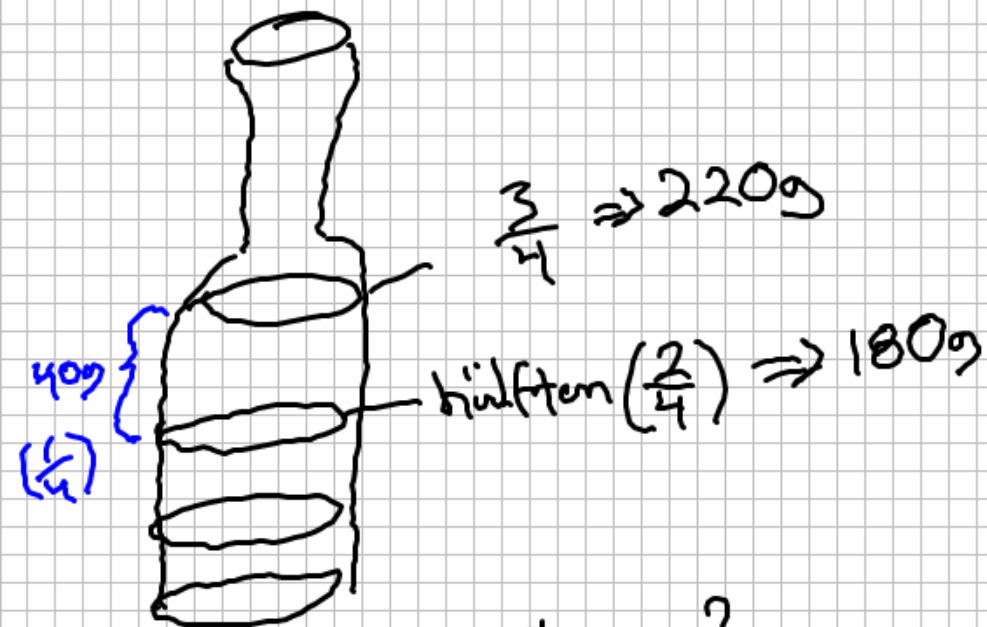


UPP 13.

1/2



Tom flaska?
Full flaska?

$$\frac{3}{4} m_{H_2O} = 220g$$

$$\frac{1}{2} m_{H_2O} = 180g$$

$$\frac{1}{4} \text{ barn vatten} = 220 - 180 = 40g$$

$$\frac{1}{4} \text{ barn vatten} = 40g$$

$$\underline{\underline{\text{Full flaska: } \left(\frac{3}{4} m_{H_2O} + \frac{1}{4} m_{H_2O} \right)}} \\ 220g + 40g = \underline{\underline{260g}}$$

$$\underline{\underline{\text{Tom flaska: } \left(\frac{2}{4} m_{H_2O} - 2 \cdot \frac{1}{4} m_{H_2O} \right)}} \\ 180 - 2 \cdot 40 = \underline{\underline{100g}}$$

Uppg 8.

2/2

$$\frac{60 \cdot 10}{0,6 \cdot 10} = \frac{600}{6} = 100$$

$$\frac{25 \cdot 100}{500 \cdot 100} = \frac{0,25}{5} = 0,05$$

$$\frac{24 \cdot 100}{0,02 \cdot 100} = \frac{2400}{2} = 1200$$